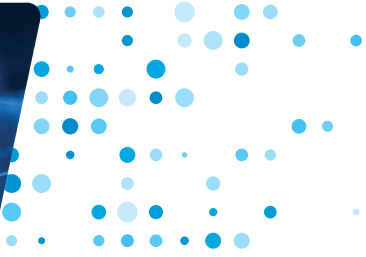


MTP TAP MODULE



A PERFECT BLEND OF PERFORMANCE AND FLEXIBILITY

The MOD-TAP is the result of years of experience with high-end fiber optic technology as well as sturdy chassis construction design. The MOD-TAP is a high-density, modular fiber optic solution providing up to 24 LC TAP modules or 16 MTP or 40G BiDi TAP modules in 1U.

MTP Fiber Optic Modules use low insertion loss US Conec MTP Elite® connectors and OM4 Multi-Mode fiber optic cabling providing a 50/50 split ratio.



MAXIMUM INSERTION LOSS (dB)

| | |
|-----------------------|-----------|
| SPLIT RATIO | 50 / 50 |
| Multi-Mode SR4 / SR10 | 4.2 / 4.2 |

Note: These values don't include external connector loss.

PRODUCT SPECIFICATIONS

| CHASSIS | ORDER REFERENCE |
|---|-----------------|
| 1U Modular Chassis (up to 16 MTP modules) | AMC-1U |

| CONNECTORS | TYPE / SPEED | SPLIT RATIO | ORDER REFERENCE |
|------------|-----------------------------|-------------|-----------------|
| MTP/MPO | MM 40GBASE-SR4 / 40 Gbps | 50/50 | FIM-MOD-SR4-50 |
| | MM 100GBASE-SR4 / 100 Gbps | | |
| | MM 100GBASE-SR10 / 100 Gbps | 50/50 | FIM-MOD-SR10-50 |

FEATURES

- Non-intrusive in-line monitoring
- Permanent network link guaranteed
- Monitoring of all OSI layers
- No packet loss, no point of failure
- Passive, unpowered
- High density and modular
- LC, MTP, 40G BiDi, and DiodeTAP modules available
- 10-year warranty

PRODUCT DIMENSIONS

| | DIMENSIONS (WxDxH) | WEIGHT |
|-----------------|--------------------|--------|
| MODULAR CHASSIS | 440 x 202 x 44 mm | 2140 g |
| | 17.3 x 8 x 1.7 in | 4.7 lb |
| MTP MODULE | 25 x 217 x 41 mm | 90 g |
| | 1 x 8.5 x 1.6 in | 0.2 lb |



V1.0-07/18