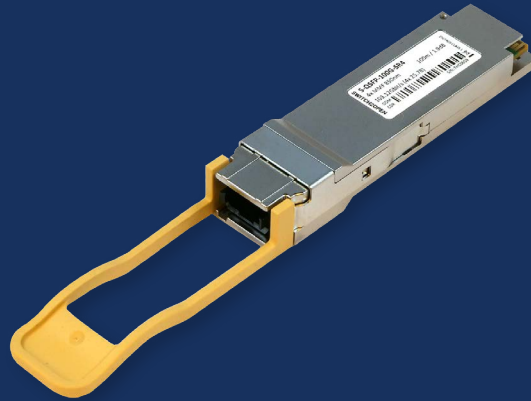


100G QSFP28 SR4 100m Transceiver



S-QSFP-100G-SR4

Quick Facts

- For 100GBASE-SR4 Ethernet links
- Data Rates: 103.12 Gbit/s (4× 25.78 Gbit/s)
- Up to 100 m via Multimode OM4
- MTP/MPO-12 Connector

Applications

- 100GBASE-SR4 100G Ethernet

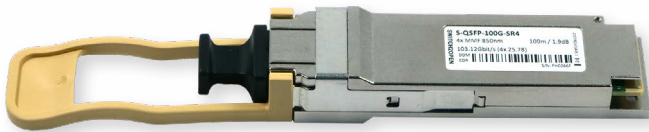
Description

S-QSFP28-100G-SR4 QSFP28 transceiver modules are designed for use in 100 Gigabit Ethernet links over multimode fiber (MMF) for a max. distance of 100m. They are compliant with the QSFP28 MSA and IEEE 802.3ba **100GBASE-SR4** standard. Digital Diagnostics Management is available. The optical transceiver is compliant per the RoHS Directive 2011/65/EU4.

Specifications

General			
Form Factor	QSFP28	Connector / Polish	MTP/MPO PC
Interface	Multimode	Type	SR4
Bandwidth	103.12 Gbit/s	Lane Count / Bandwidth per Lane	4x 25.78 Gbit/s
Distance	100 m	Temperature Range	0°C – 70°C
Power Consumption	3.5 W	DDM	Yes, internally calibrated
CDR	TX and RX	SGMII	No
Inbuilt FEC	No		

Optical			
Wavelength Tx (typical)	4x 850 nm	Wavelength Rx (typical)	4x 850 nm
Transmit min / max	-9.1 dBm / 2.4 dBm	Receiver min / max	-11 dBm / 2.4 dBm (overload)
Power Budget	1.9 dB	Receiver Type	PIN
Laser	VCSEL	Modulation	NRZ
Transmit and Dispersion Penalty	5 dB	Extinction Ratio	3 dB



Protocols

- 100G Ethernet

Warranty

The Switch2Open transceivers include a 1-year limited hardware warranty, which covers parts, repair, or replacement after the unit is received.

Support & Services

Additional support levels including next business day advance replacement are available on demand.

Ordering Information

Part Number	Description
S-QSFP-100G-SR4	100G QSFP28 SR4 Transceiver, x310nm, LC, 100m